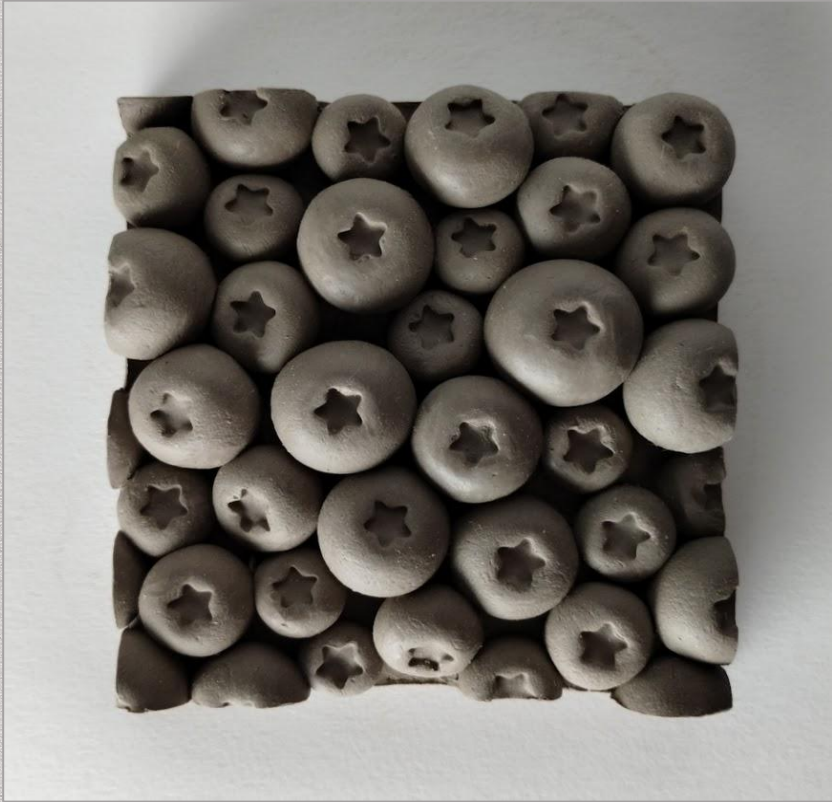




Fireside Studio

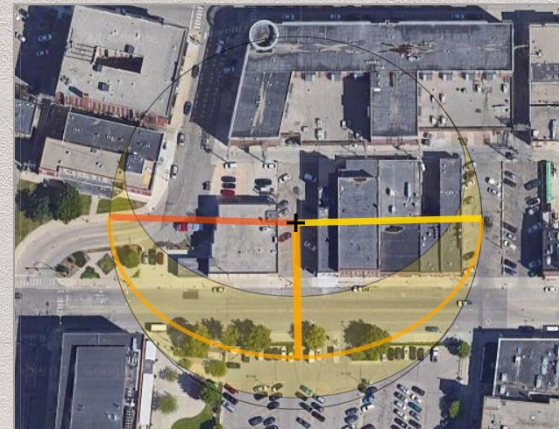
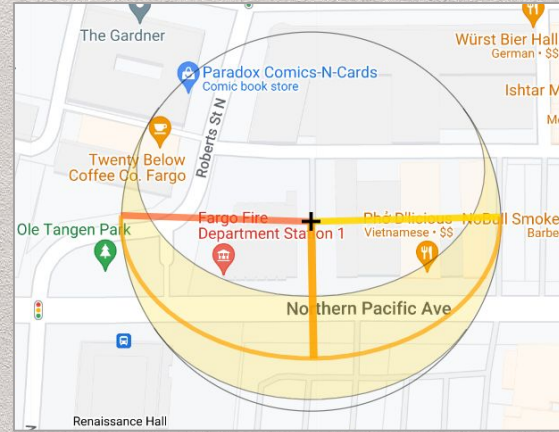
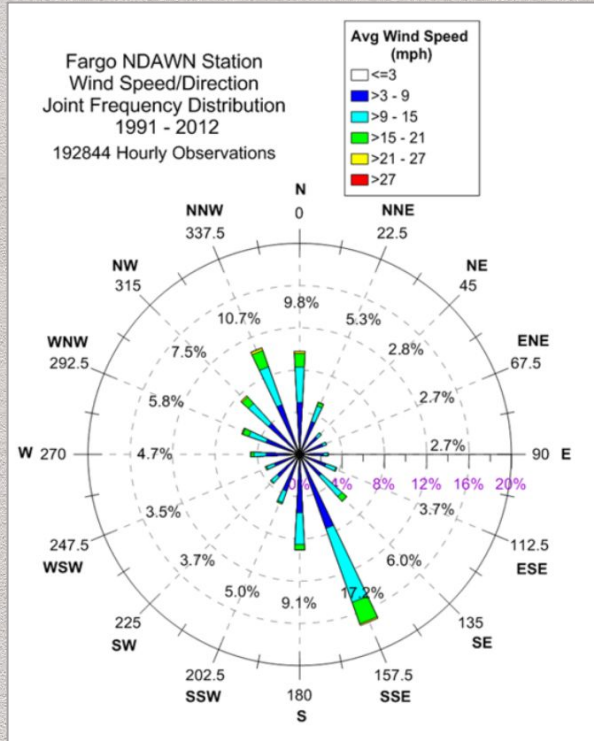
Piper Thorson

Making Deliverable



Site Research

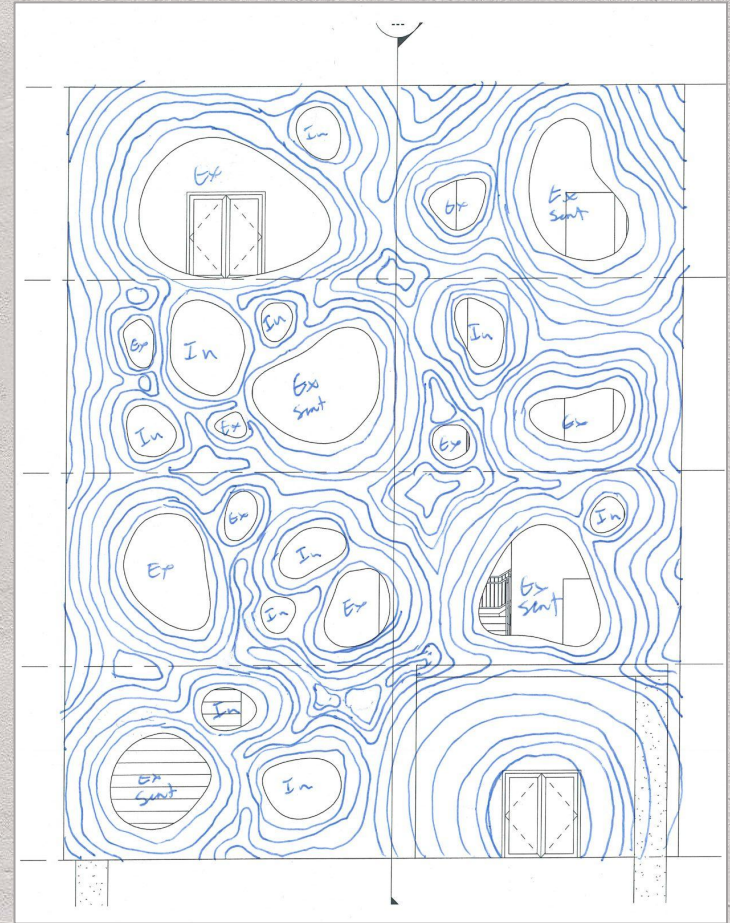
633 Northern Pacific Ave

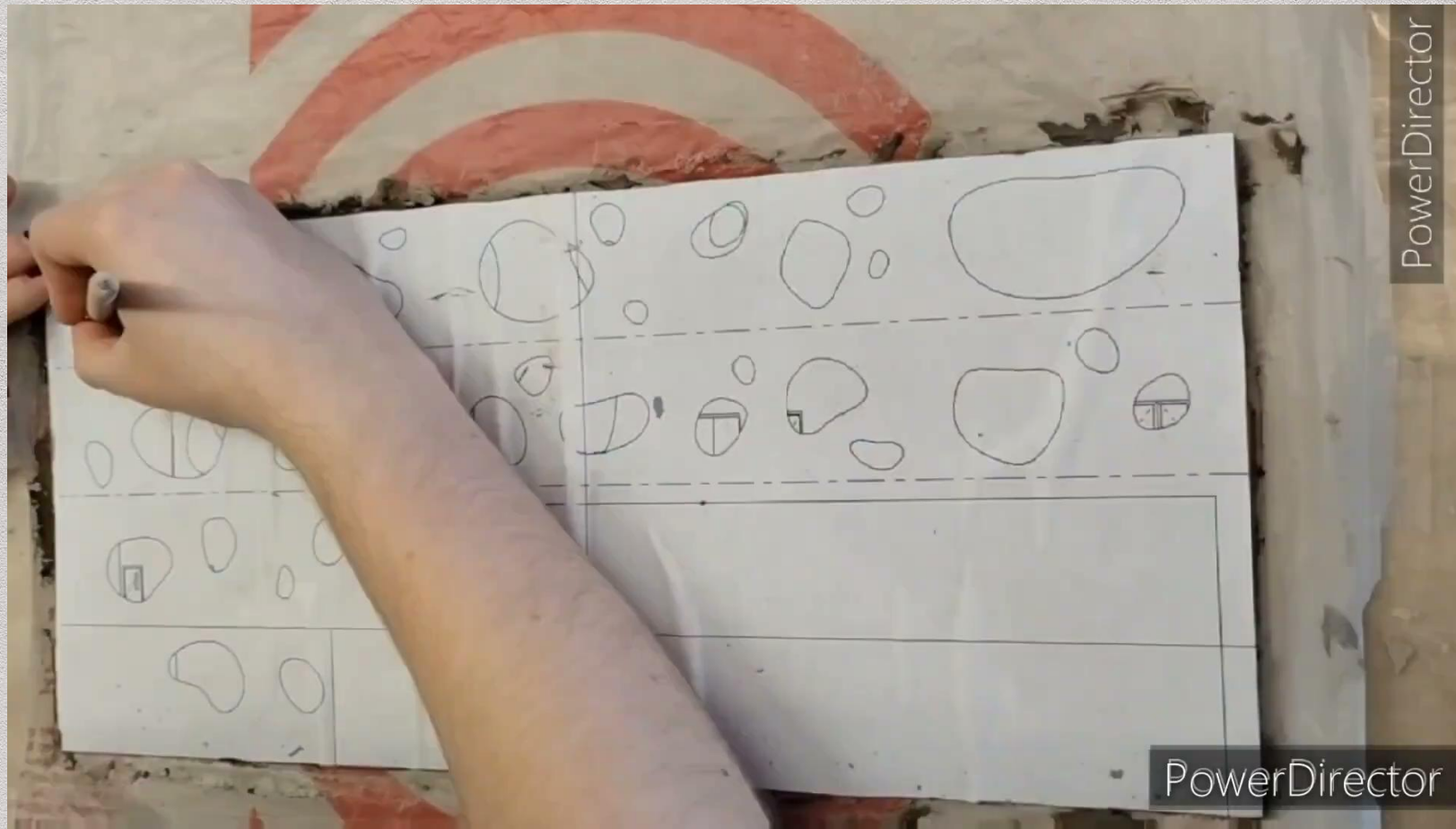


Exterior Process

I wanted an organic exterior that conveyed the creative potential of ceramics as a medium.

Local Example: Circular Windows





PowerDirector

PowerDirector

South Elevation

Start with flat slab of clay



Carve window holes



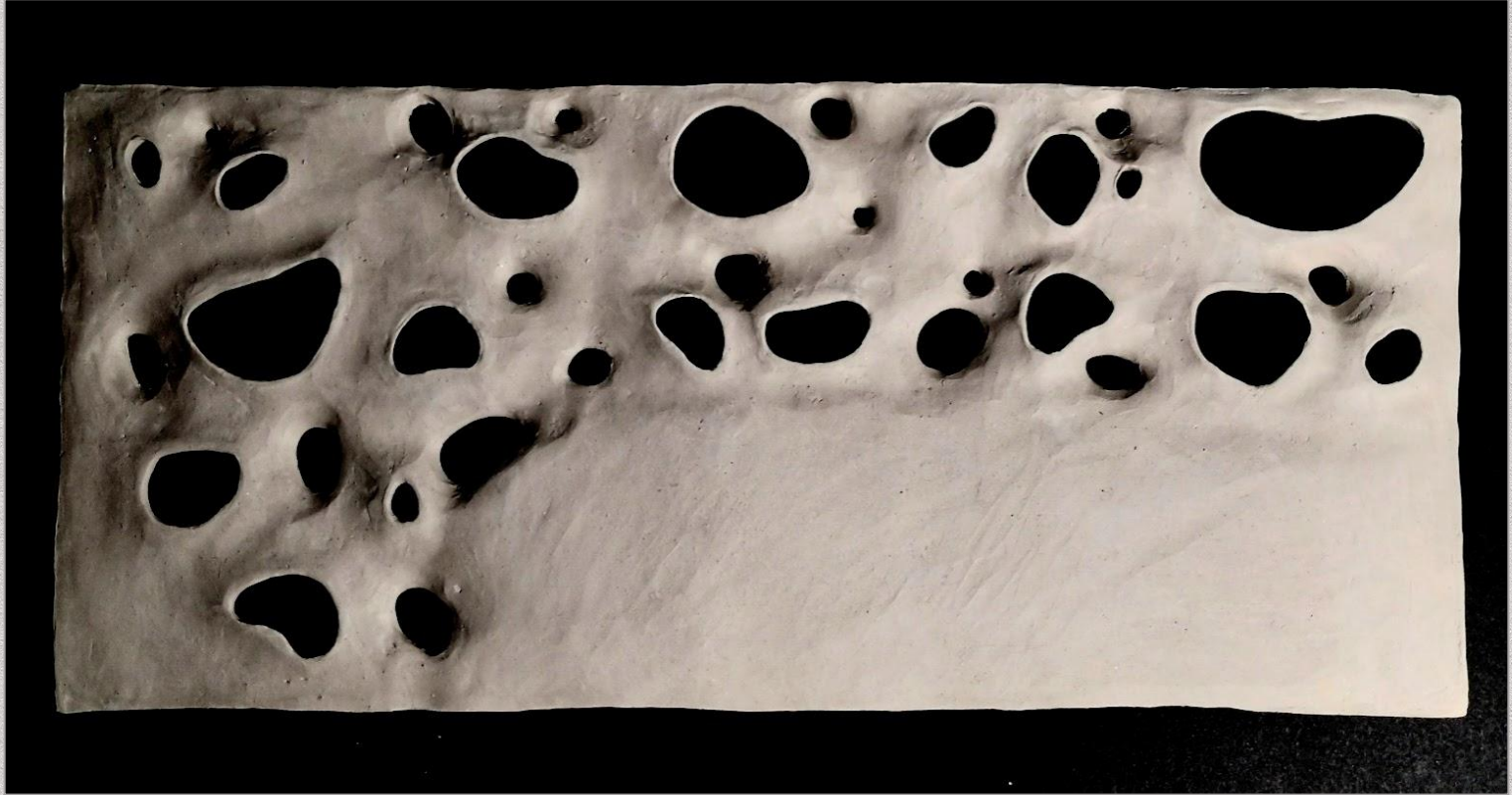
Push and Pull the frames of the window to create depth and shadow



East Elevation

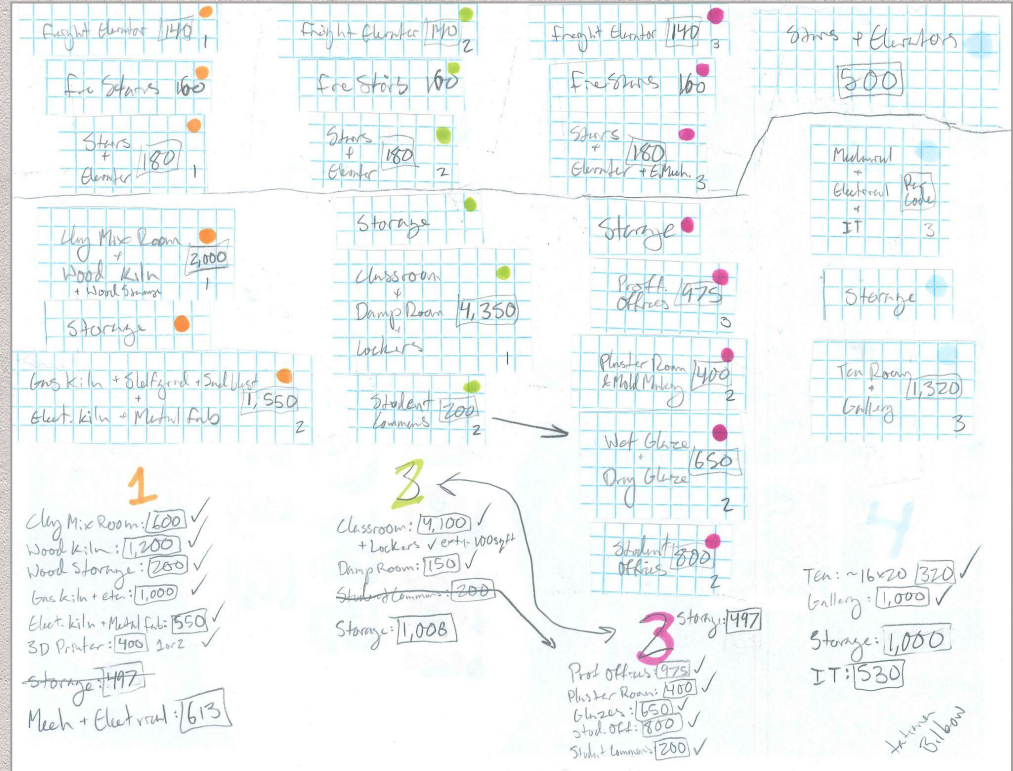
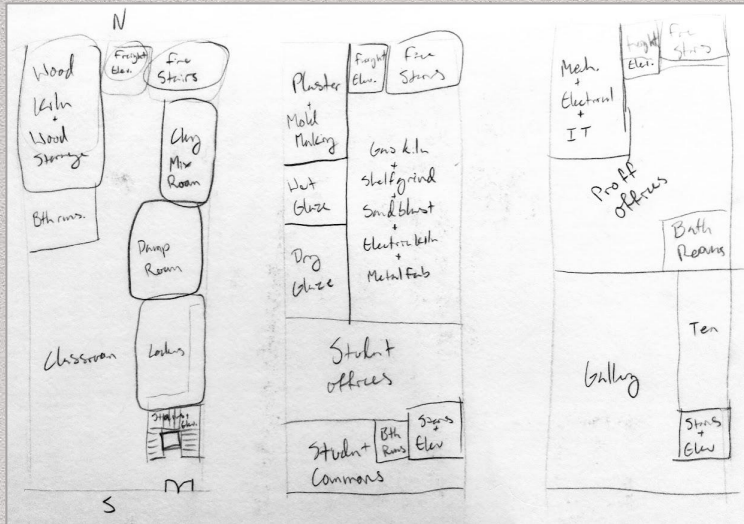


West Elevation

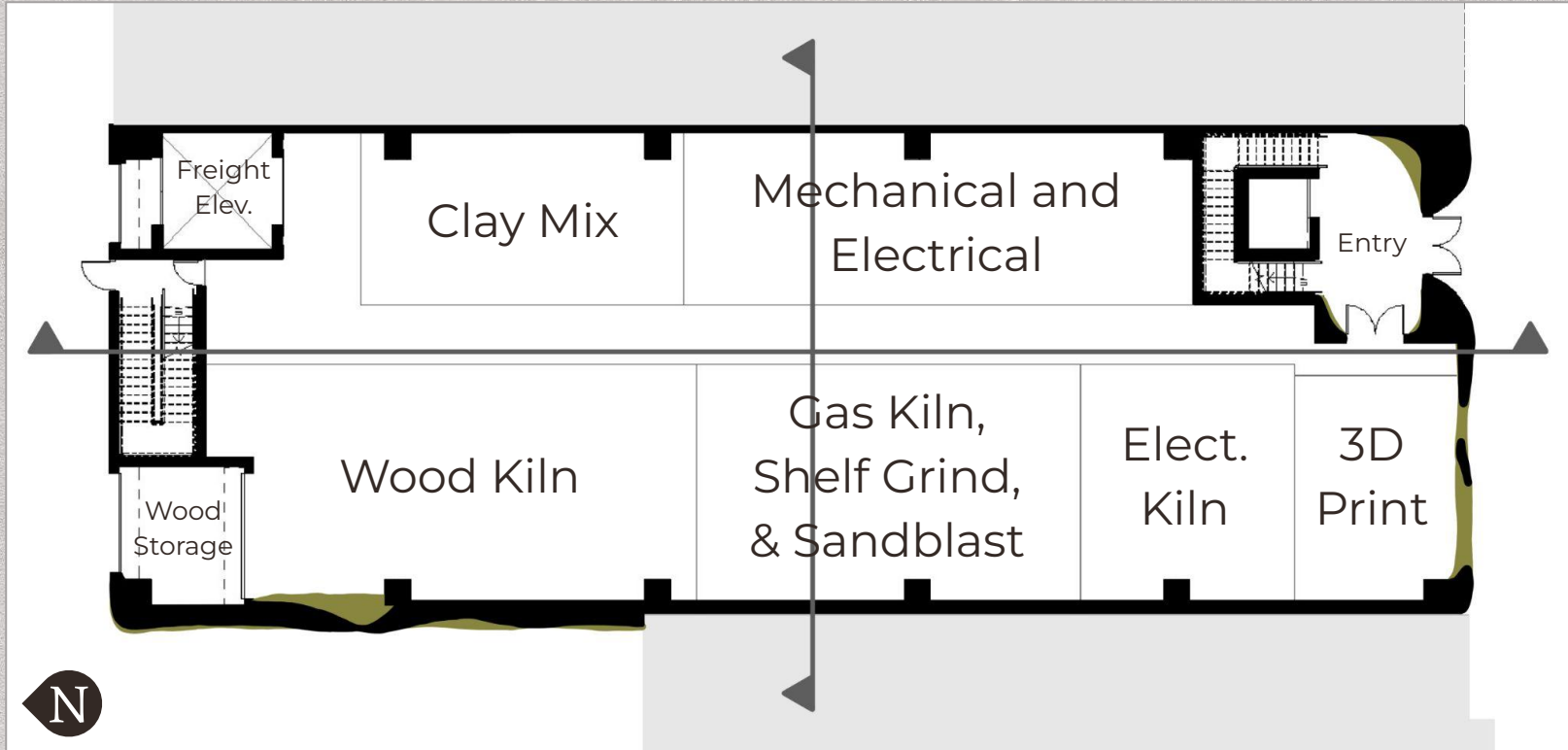


Floor plans - Process

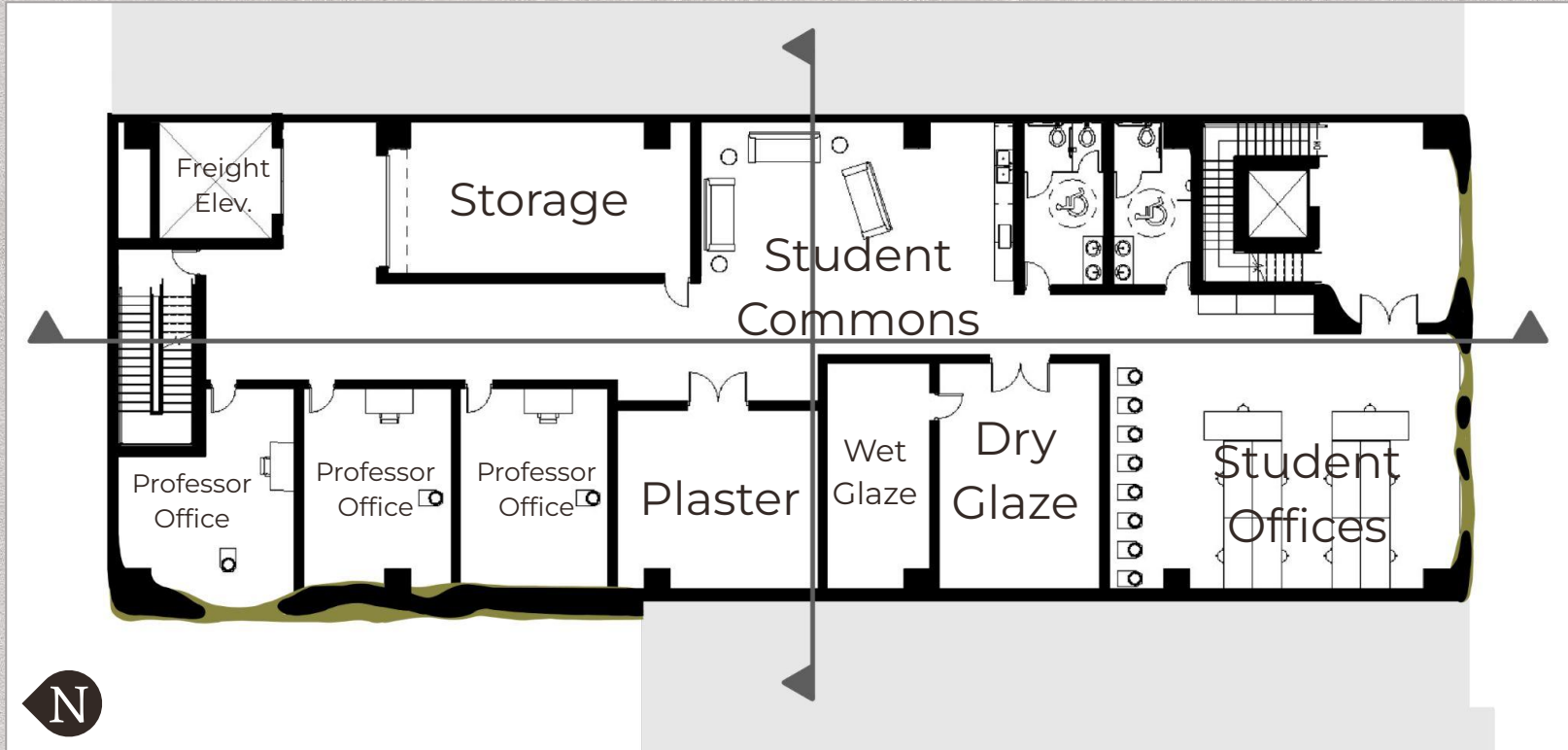
Grouping and Organizing
Square Footage as Guide



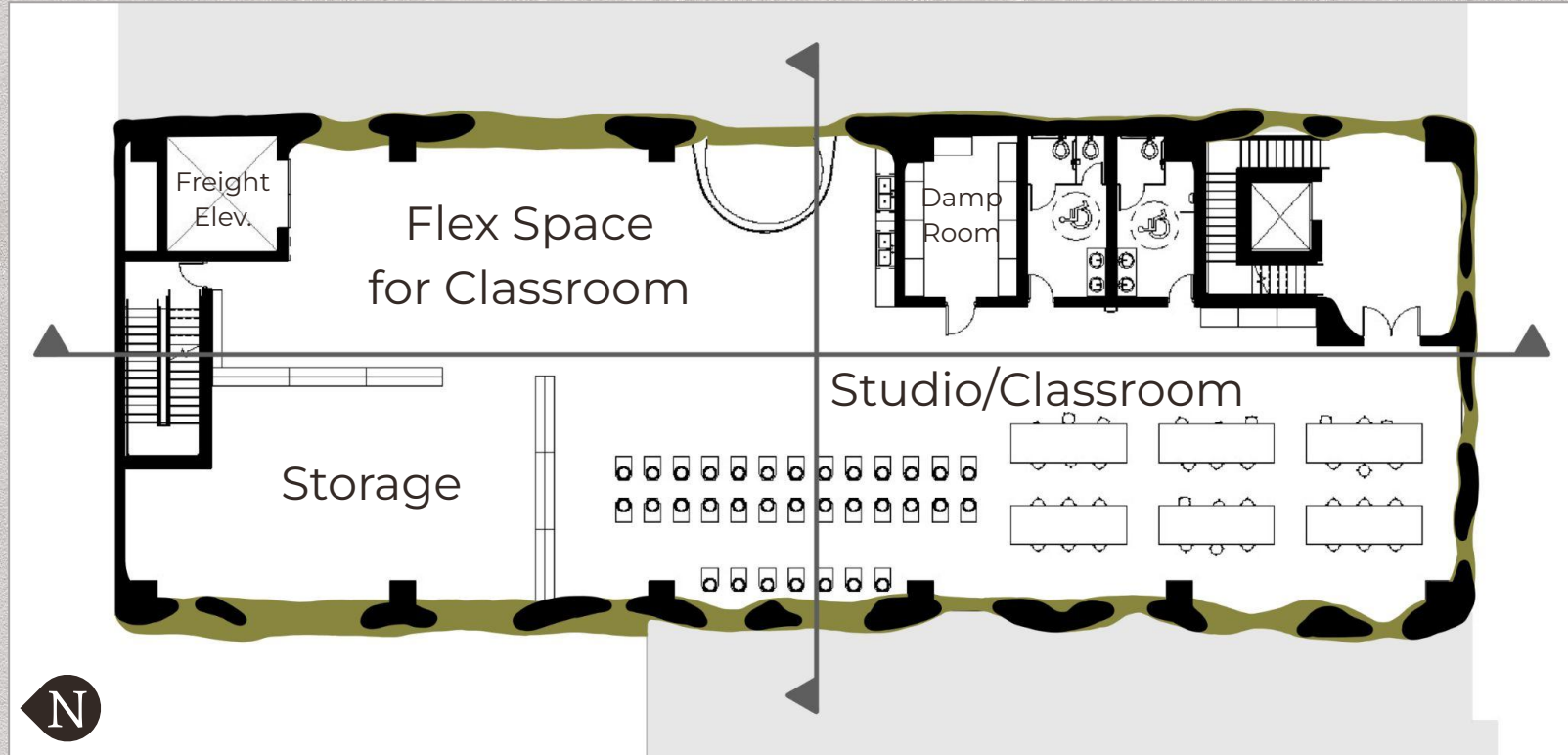
Floor plans - Floor 1



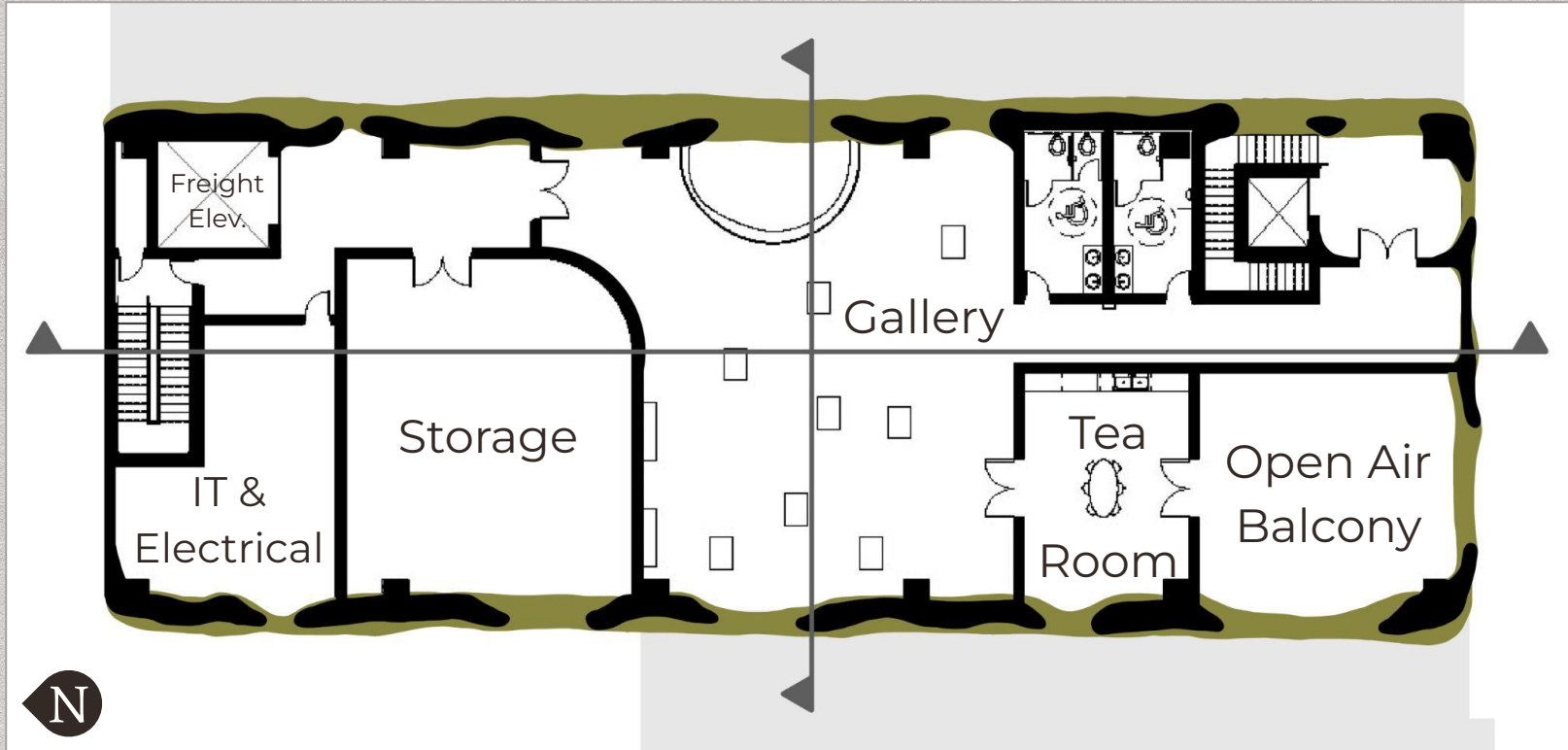
Floor plans - Floor 2



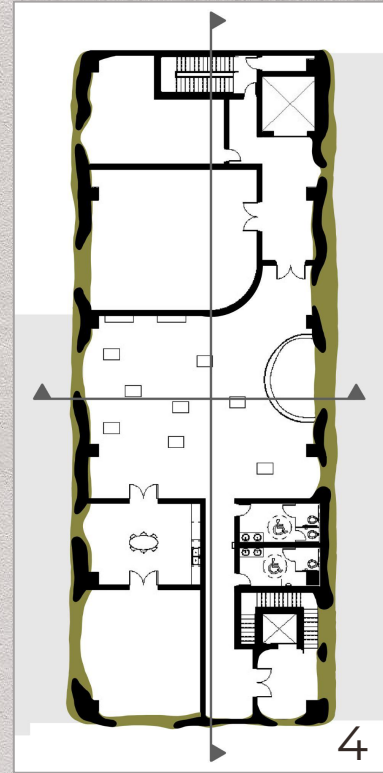
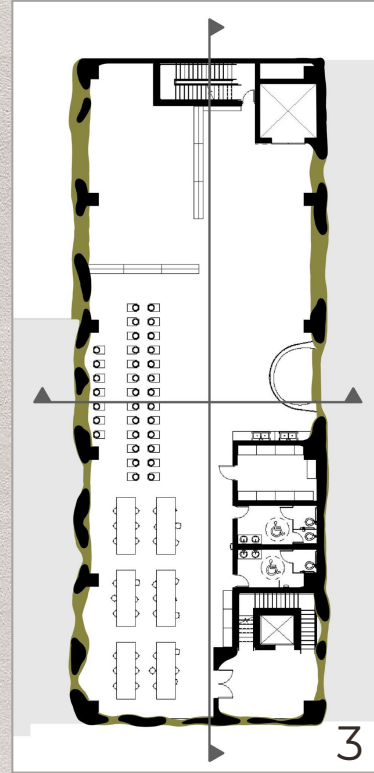
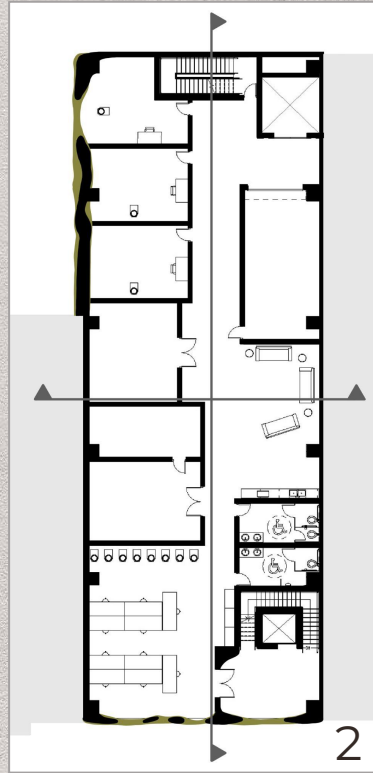
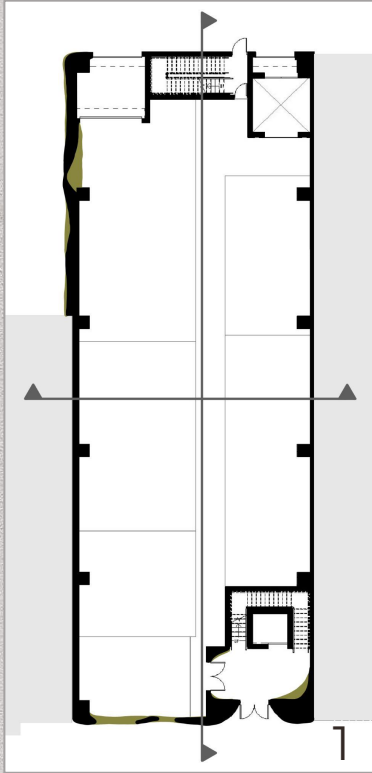
Floor plans - Floor 3



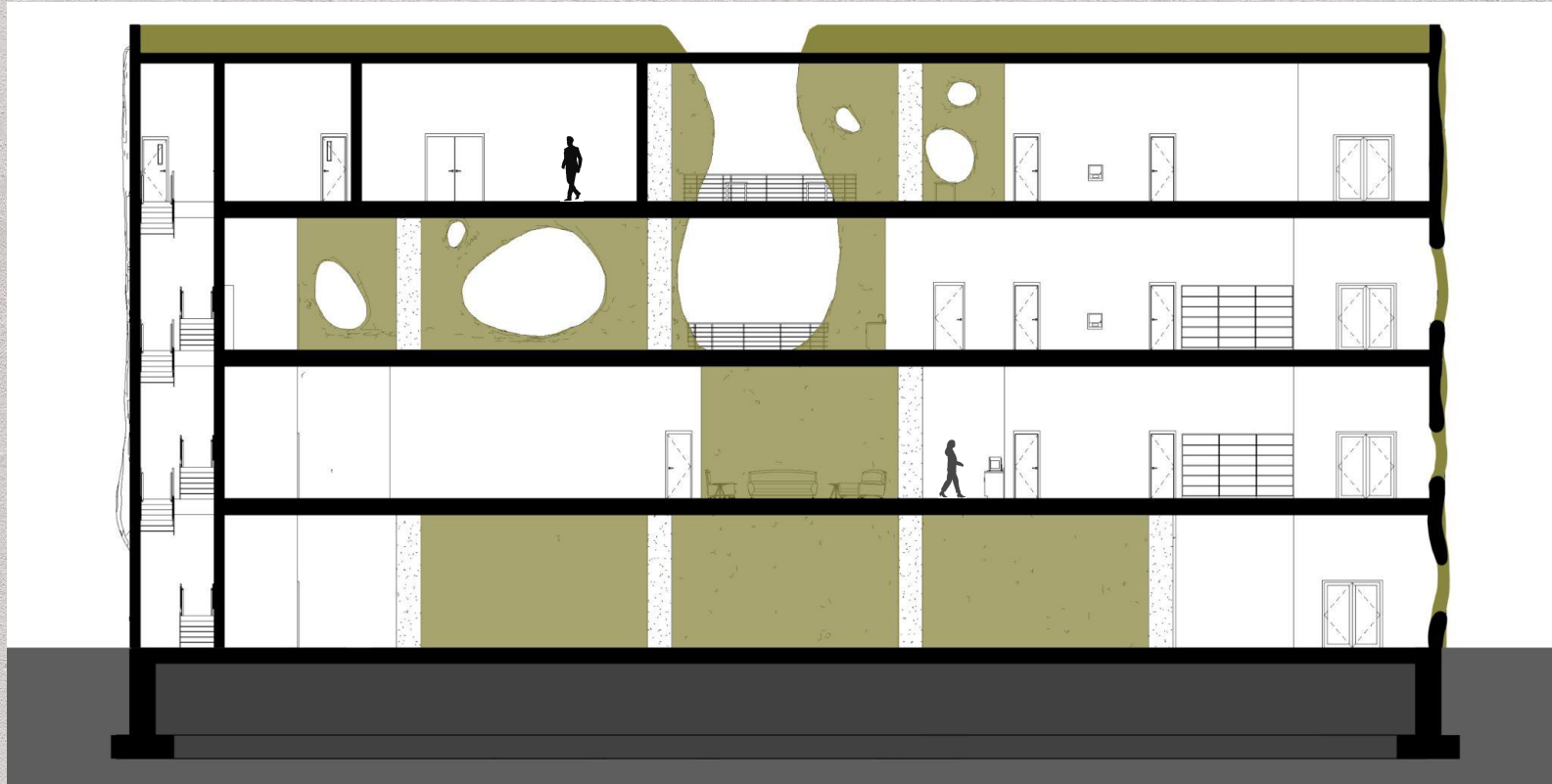
Floor plans - Floor 4



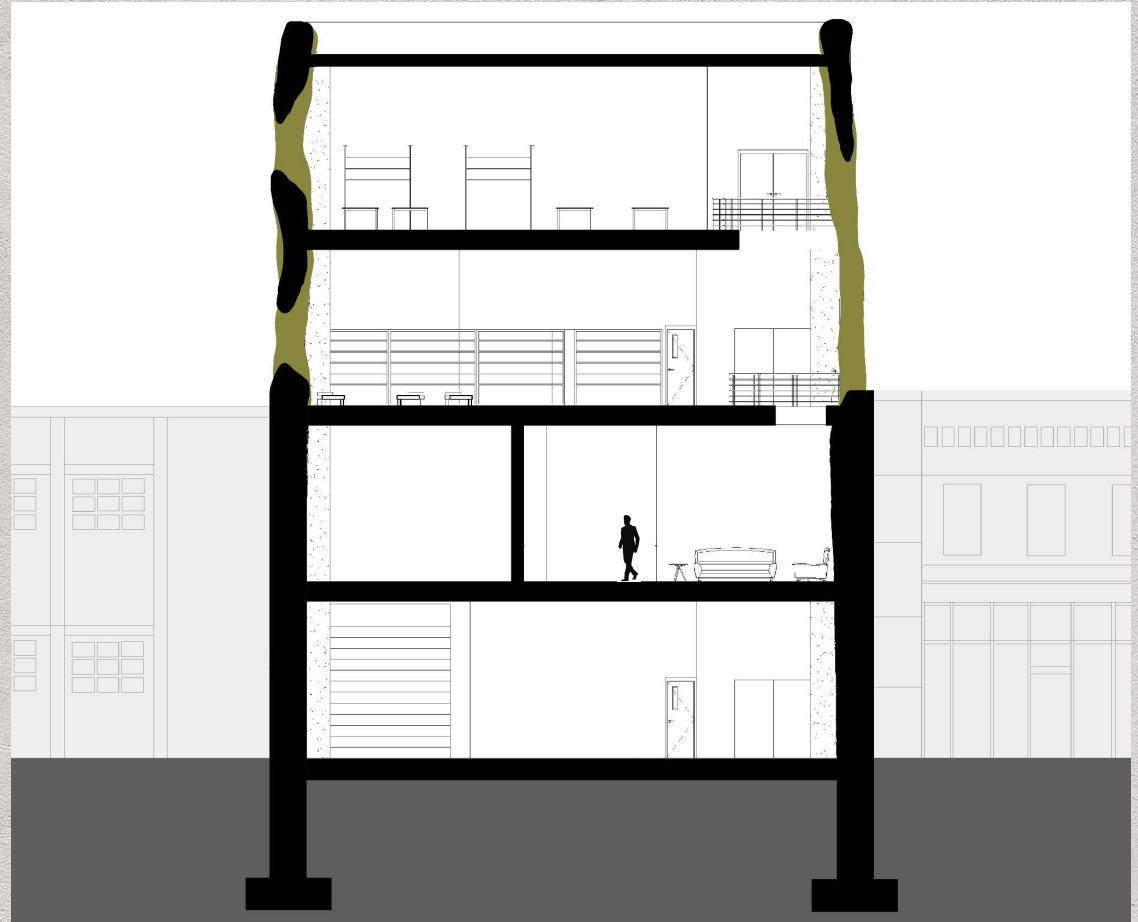
Floor Plans - Combined



Section 1



Section 2



Structure

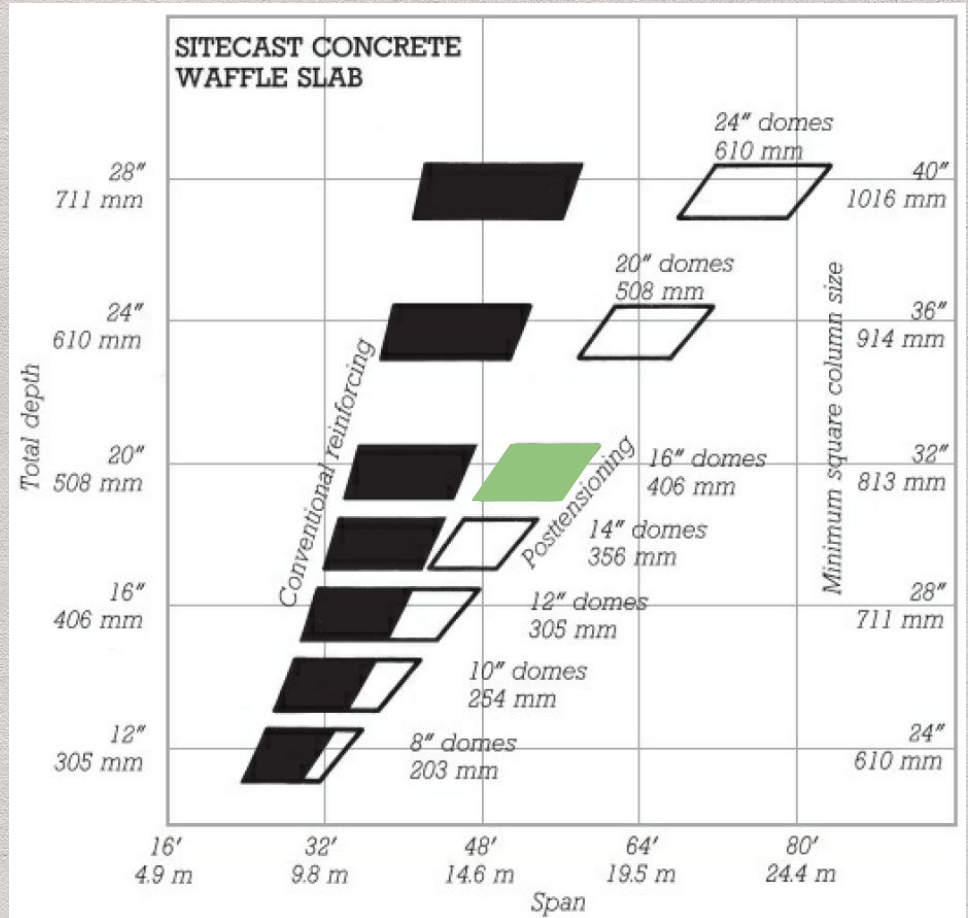
Post Tensioned Sitecast
Waffle Slab

16" Domes

20" Total Depth

Span up to ~56'

Minimum Square Column
size 32" x 32"



Concrete

- ❑ Vertiscape by Respyre - Concrete or Plaster formula
 - ❑ I will use the plaster over my structural precast concrete
- ❑ Stores CO₂ as Calcium Carbonate
- ❑ Absorbs and stores water, then slowly releases it into the moss

Roof Plan

Room for 160 Solar Panels

Sustainability

- ❑ Rain Collection
- ❑ Solar Opportunity
- ❑ Reducing CO₂
- ❑ Interior Air Quality
- ❑ Removing Particulates
- ❑ Natural Lighting

